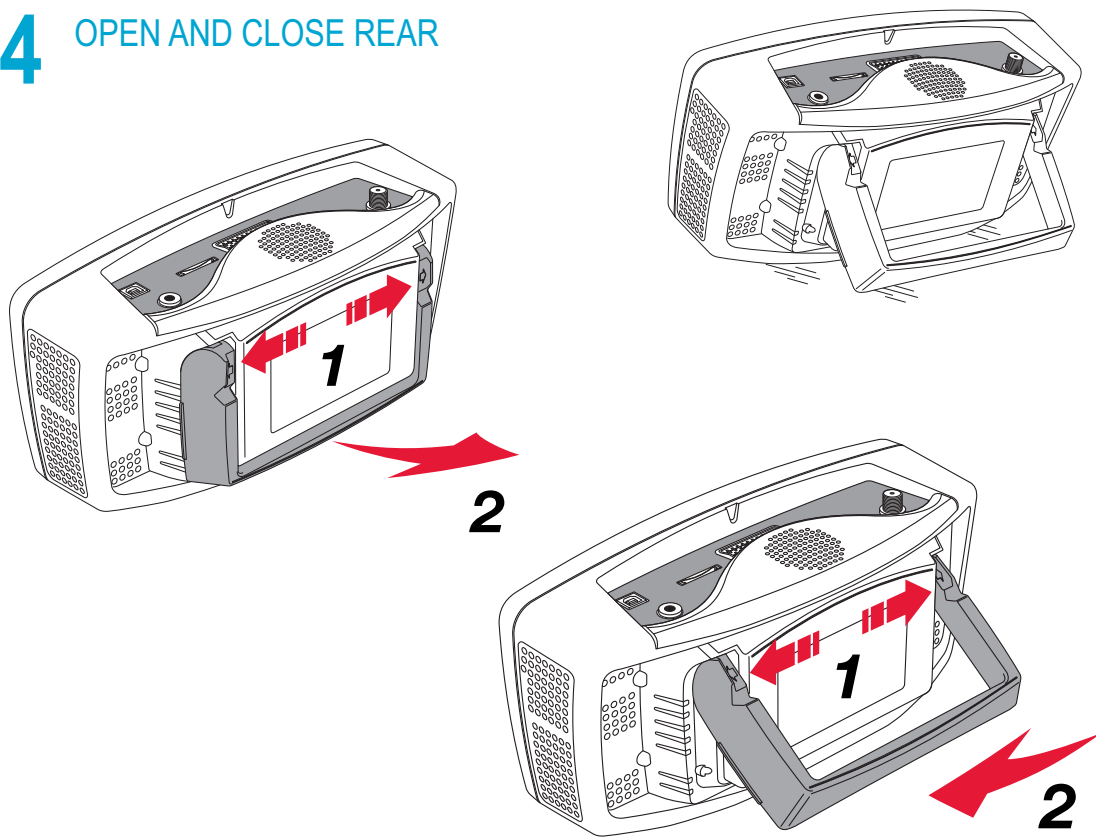
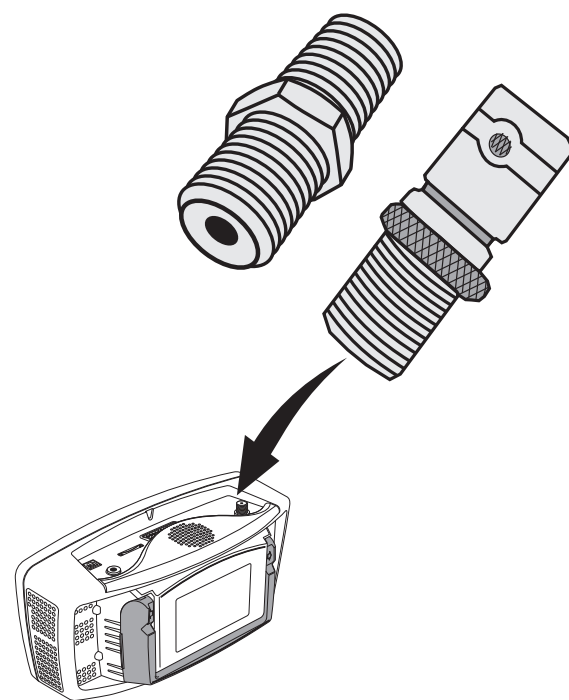


4 OPEN AND CLOSE REAR

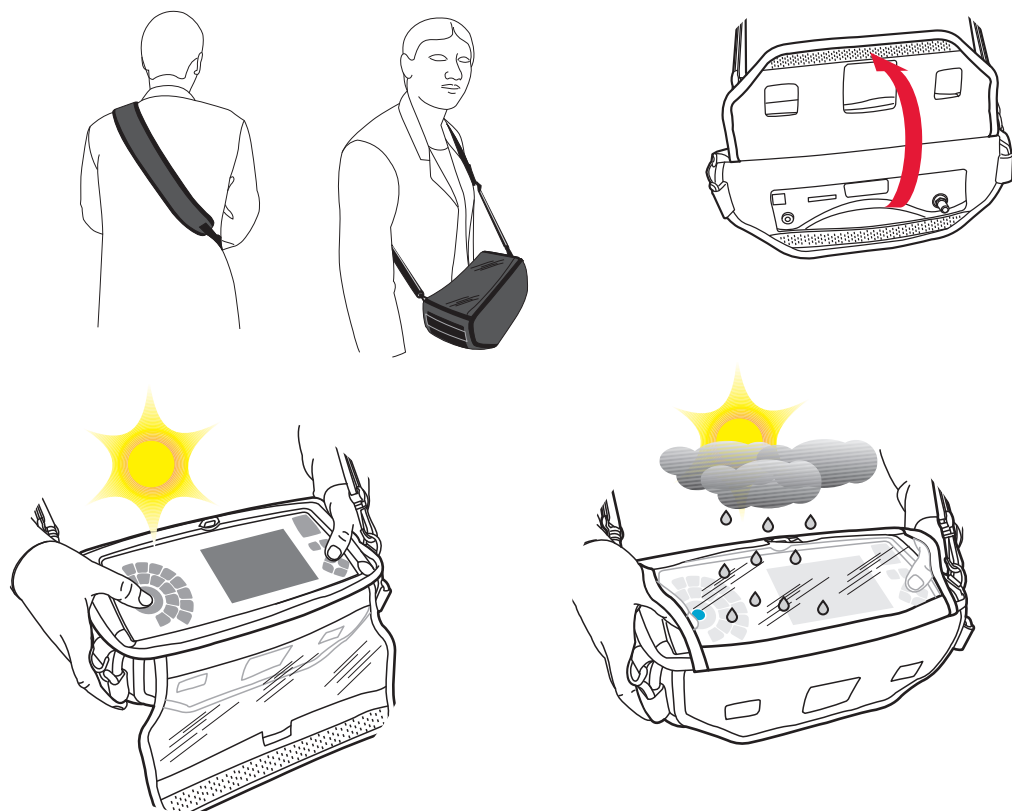


5 INTERCHANGEABLE CONNECTOR

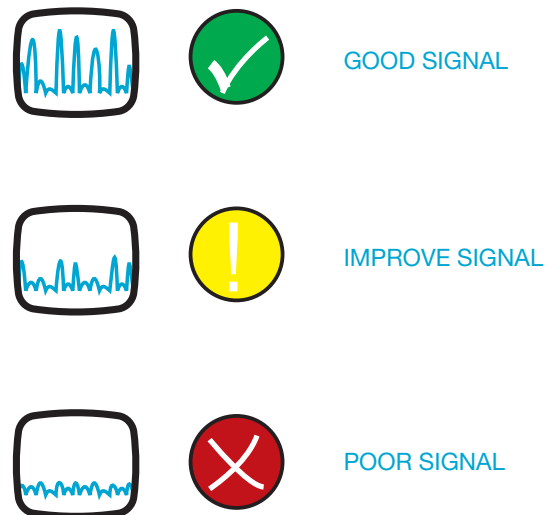


We recommend replacing after extended use

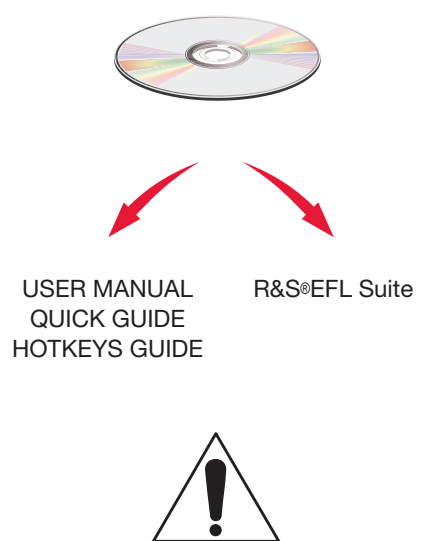
6 PROTECTION CASE OPTION



7 QUALITY CHECK MARKS

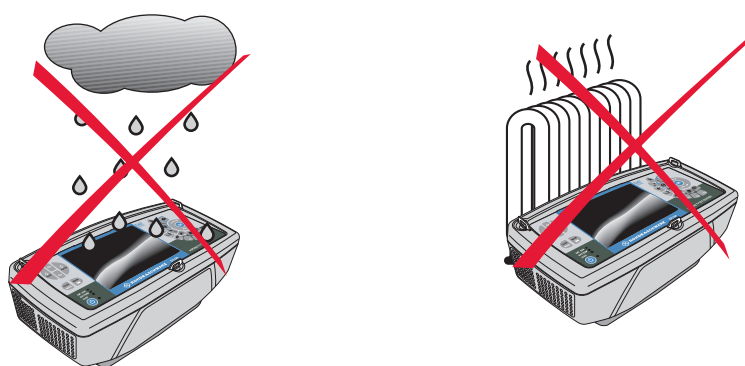


8 CD INCLUDED & INTERNET



9 SAFETY INSTRUCTIONS

Read through and comply with the safety instruction provided in the User Manual



10

DVB[®]
Digital Video
Broadcasting



Li-ION
battery

